



# 检测报告 Test Report

报告编号 A2210048908101006E  
Report No. A2210048908101006E

第 1 页 共 8 页  
Page 1 of 8

报告抬头公司名称 桂林有联电子有限公司  
Company Name GUILIN YOULIAN ELECTRONIC CO.,LTD  
shown on Report  
地 址 广西壮族自治区桂林经济技术开发区苏桥工业园银杏东环南路西侧C13  
Address C13, WEST SIDE OF EAST RING SOUTH ROAD, GINKGO, SUQIAO INDUSTRIAL PARK, GUILIN ECONOMIC AND TECHNOLOGICAL DEVELOPMENT ZONE, GUANGXI ZHUANG AUTONOMOUS REGION

以下测试之样品及样品信息由申请者提供并确认

The following sample(s) and sample information was/were submitted and identified by/on the behalf of the applicant

样品名称 透明夹层  
Sample Name Solid Silicone Connectors  
样品颜色 中黑外透明  
Color Medium black with transparent outside  
材料名称 硅橡胶  
Material Silicone Rubber  
样品接收日期 2021.02.18  
Sample Received Date Feb. 18, 2021  
样品检测日期 2021.02.18-2021.02.22  
Testing Period Feb. 18, 2021 to Feb. 22, 2021

检测要求 根据客户要求, 对所提交样品中的铅(Pb), 镉(Cd), 汞(Hg), 六价铬(Cr(VI)), 多溴联苯(PBBs), 多溴二苯醚(PBDEs), 邻苯二甲酸酯(DBP, BBP, DEHP, DIBP)进行测试。

Test Requested As specified by client, to test Lead (Pb), Cadmium (Cd), Mercury (Hg), Hexavalent Chromium (Cr(VI)), Polybrominated Biphenyls (PBBs), Polybrominated Diphenyl Ethers (PBDEs), Phthalates (DBP, BBP, DEHP, DIBP) in the submitted sample(s).

检测依据/检测结果 请参见下页。  
Test Method/Test Result(s) Please refer to the following page(s).

主 检

孙 婵

审 核

刘琳慧

Tested by

Reviewed by

批准

郑晴涛

日 期

2021.02.22

Approved by

Date

郑晴涛

技术经理 Technical Manager

No. R294341288

检验检测专用章 华测检测集团股份有限公司

广东省深圳市宝安区新安街道兴东社区华测检测大楼

Inspection & Testing Services Centre Testing International Group Co.,Ltd.

CTI Building, Xing Dong Community, Xin'an Sub-district, Bao'an District, Shenzhen City, Guangdong Province, P.R. China

# 检测报告 Test Report

报告编号 A2210048908101006E  
Report No. A2210048908101006E

第 2 页 共 8 页  
Page 2 of 8

\*\*\*\*\*

## 结论 Conclusion

测试样品 Tested Sample	依据标准/指令 According to standard/directive	结果 Result
提交样品 Submitted Sample	欧盟RoHS指令2011/65/EU及其修订指令(EU) 2015/863 RoHS Directive 2011/65/EU with amendment (EU) 2015/863	符合 PASS

\*\*\*\*\*

符合表示检测结果满足欧盟RoHS指令2011/65/EU及其修订指令(EU) 2015/863要求的限值。  
PASS means that the results shown on the report comply with the limits set by RoHS Directive 2011/65/EU with amendment (EU) 2015/863.

# 检测报告

## Test Report

报告编号 A2210048908101006E

第 3 页 共 8 页

Report No. A2210048908101006E

Page 3 of 8

检测依据 Test Method

测试项目 Test Item(s)	测试方法 Test Method	测试仪器 Measured Equipment(s)
铅 Lead (Pb)	IEC 62321-5:2013	ICP-OES
镉 Cadmium (Cd)	IEC 62321-5:2013	ICP-OES
汞 Mercury (Hg)	IEC 62321-4:2013+AMD1:2017 CSV	ICP-OES
六价铬 Hexavalent Chromium (Cr(VI))	IEC 62321-7-2:2017和/或IEC 62321-5:2013测试总铬含量 IEC 62321-7-2:2017 and/or determination of Total Chromium by IEC 62321-5:2013	UV-Vis/ICP-OES
多溴联苯 Polybrominated Biphenyls (PBBs)	IEC 62321-6:2015	GC-MS
多溴二苯醚 Polybrominated Diphenyl Ethers (PBDEs)	IEC 62321-6:2015	GC-MS
邻苯二甲酸酯 Phthalates (DBP, BBP, DEHP, DIBP)	IEC 62321-8:2017	GC-MS

# 检测报告

## Test Report

报告编号 A2210048908101006E

第 4 页 共 8 页

Report No. A2210048908101006E

Page 4 of 8

### 检测结果 Test Result(s)

测试项目 Tested Item(s)	结果 Result	方法检出限 MDL	限值 Limit
铅 Lead (Pb)	N.D.	2 mg/kg	1000 mg/kg
镉 Cadmium (Cd)	N.D.	2 mg/kg	100 mg/kg
汞 Mercury (Hg)	N.D.	2 mg/kg	1000 mg/kg
六价铬 Hexavalent Chromium (Cr(VI))	N.D.	8 mg/kg	1000 mg/kg

测试项目 Tested Item(s)	结果 Result	方法检出限 MDL	限值 Limit
<b>多溴联苯 Polybrominated Biphenyls (PBBs)</b>			
一溴联苯 Monobromobiphenyl	N.D.	5 mg/kg	1000 mg/kg
二溴联苯 Dibromobiphenyl	N.D.	5 mg/kg	
三溴联苯 Tribromobiphenyl	N.D.	5 mg/kg	
四溴联苯 Tetrabromobiphenyl	N.D.	5 mg/kg	
五溴联苯 Pentabromobiphenyl	N.D.	5 mg/kg	
六溴联苯 Hexabromobiphenyl	N.D.	5 mg/kg	
七溴联苯 Heptabromobiphenyl	N.D.	5 mg/kg	
八溴联苯 Octabromobiphenyl	N.D.	5 mg/kg	
九溴联苯 Nonabromobiphenyl	N.D.	5 mg/kg	
十溴联苯 Decabromobiphenyl	N.D.	5 mg/kg	

测试项目 Tested Item(s)	结果 Result	方法检出限 MDL	限值 Limit
<b>多溴二苯醚 Polybrominated Diphenyl Ethers (PBDEs)</b>			
一溴二苯醚 Monobromodiphenyl ether	N.D.	5 mg/kg	1000 mg/kg
二溴二苯醚 Dibromodiphenyl ether	N.D.	5 mg/kg	
三溴二苯醚 Tribromodiphenyl ether	N.D.	5 mg/kg	
四溴二苯醚 Tetrabromodiphenyl ether	N.D.	5 mg/kg	
五溴二苯醚 Pentabromodiphenyl ether	N.D.	5 mg/kg	
六溴二苯醚 Hexabromodiphenyl ether	N.D.	5 mg/kg	
七溴二苯醚 Heptabromodiphenyl ether	N.D.	5 mg/kg	
八溴二苯醚 Octabromodiphenyl ether	N.D.	5 mg/kg	
九溴二苯醚 Nonabromodiphenyl ether	N.D.	5 mg/kg	
十溴二苯醚 Decabromodiphenyl ether	N.D.	5 mg/kg	

# 检测报告

## Test Report

报告编号 A2210048908101006E

第 5 页 共 8 页

Report No. A2210048908101006E

Page 5 of 8

**检测结果 Test Result(s)**

测试项目 Tested Item(s)	结果 Result	方法检出限 MDL	限值 Limit
<b>邻苯二甲酸酯 Phthalates (DBP, BBP, DEHP, DIBP)</b>			
邻苯二甲酸二丁酯 Dibutyl phthalate (DBP) CAS#:84-74-2	N.D.	50 mg/kg	1000 mg/kg
邻苯二甲酸丁基苄基酯 Butyl benzyl phthalate (BBP) CAS#:85-68-7	N.D.	50 mg/kg	1000 mg/kg
邻苯二甲酸二(2-乙基)己酯 Di-(2-ethylhexyl) phthalate (DEHP) CAS#:117-81-7	N.D.	50 mg/kg	1000 mg/kg
邻苯二甲酸二异丁酯 Diisobutyl phthalate (DIBP) CAS#:84-69-5	N.D.	50 mg/kg	1000 mg/kg

**样品/部位描述** 透明/黑色/透明硅橡胶  
**Sample/Part Description** Transparent/black/transparent silicone rubber

**备注:** 对于检测铅, 镉, 汞之样品已完全溶解。

-N.D. = 未检出 (小于方法检出限)

-mg/kg = ppm = 百万分之一

-1000 mg/kg = 0.1%

**Remark:** The sample(s) had been dissolved totally tested for Lead, Cadmium, Mercury.

-MDL = Method Detection Limit

-N.D. = Not Detected (<MDL)

-mg/kg = ppm = parts per million

-1000 mg/kg = 0.1%

# 检测报告 Test Report

报告编号 A2210048908101006E

第 6 页 共 8 页

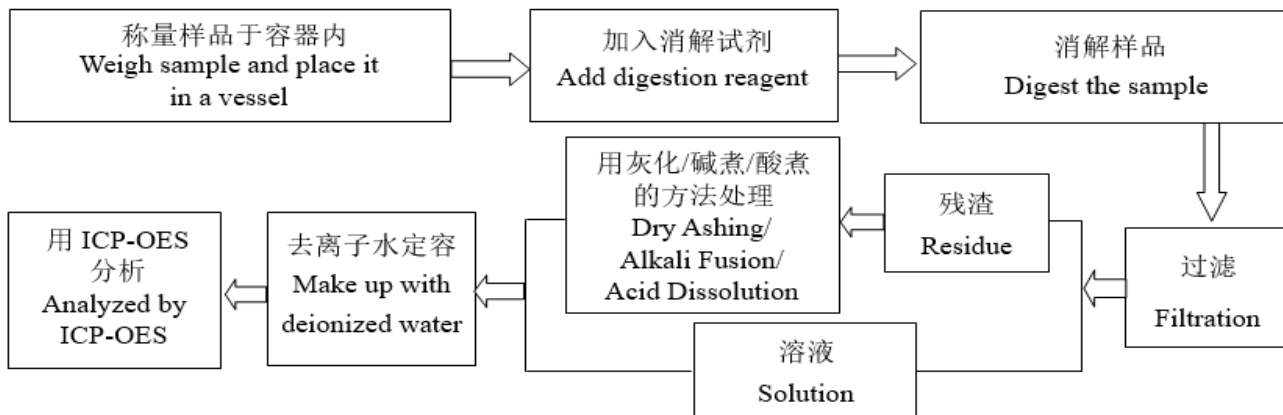
Report No. A2210048908101006E

Page 6 of 8

## 检测流程 Test Process

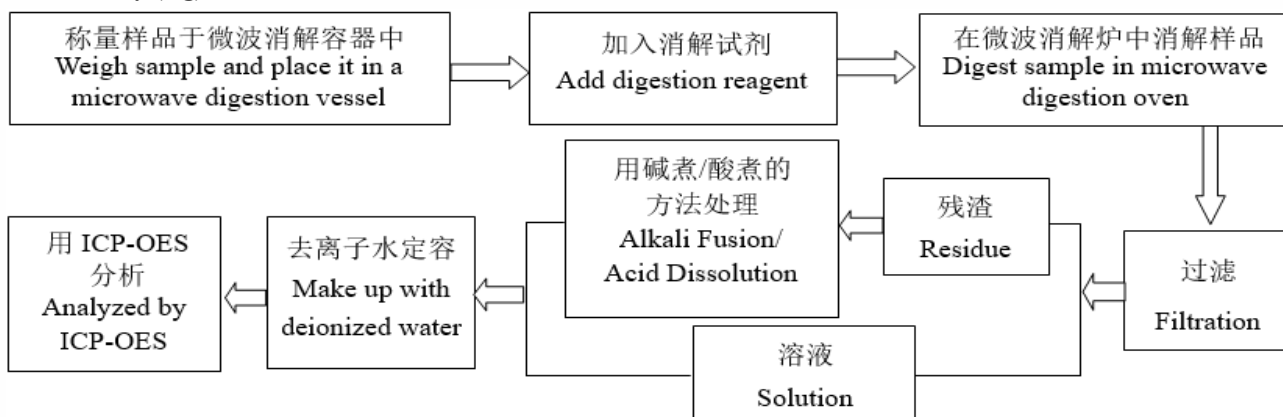
### 1. 铅(Pb), 镉(Cd), 铬(Cr)

#### Lead (Pb), Cadmium (Cd), Chromium (Cr)



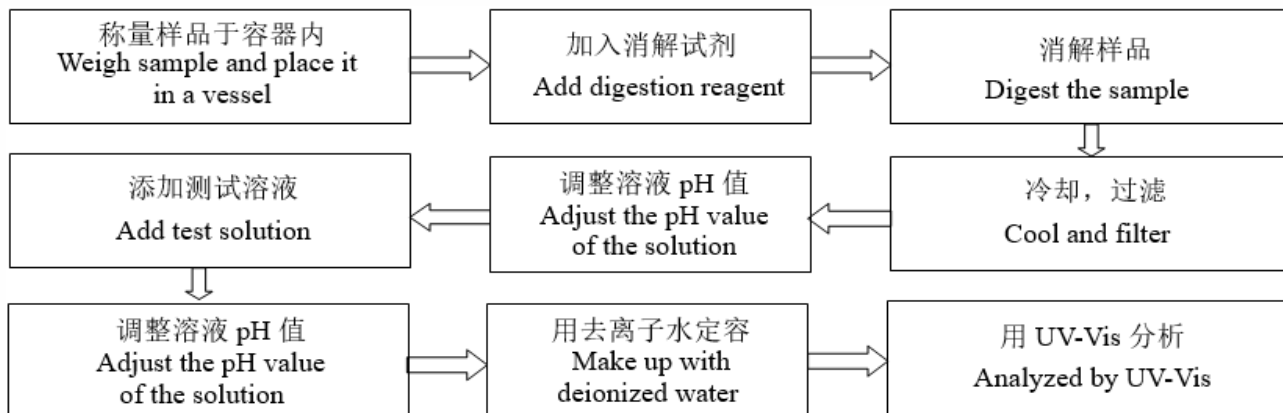
### 2. 汞(Hg)

#### Mercury (Hg)



### 3. 六价铬(Cr(VI))

#### Hexavalent Chromium (Cr(VI))



# 检测报告 Test Report

报告编号 A2210048908101006E

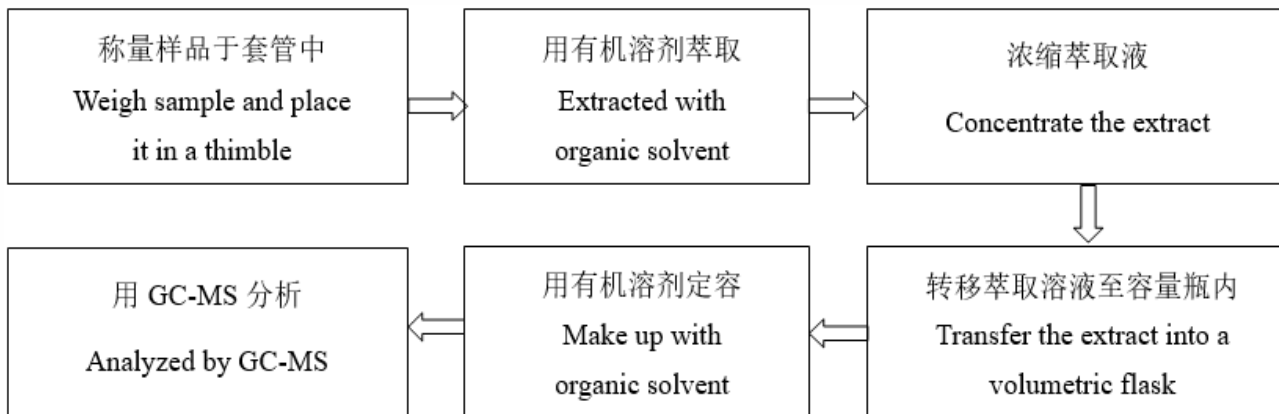
第 7 页 共 8 页

Report No. A2210048908101006E

Page 7 of 8

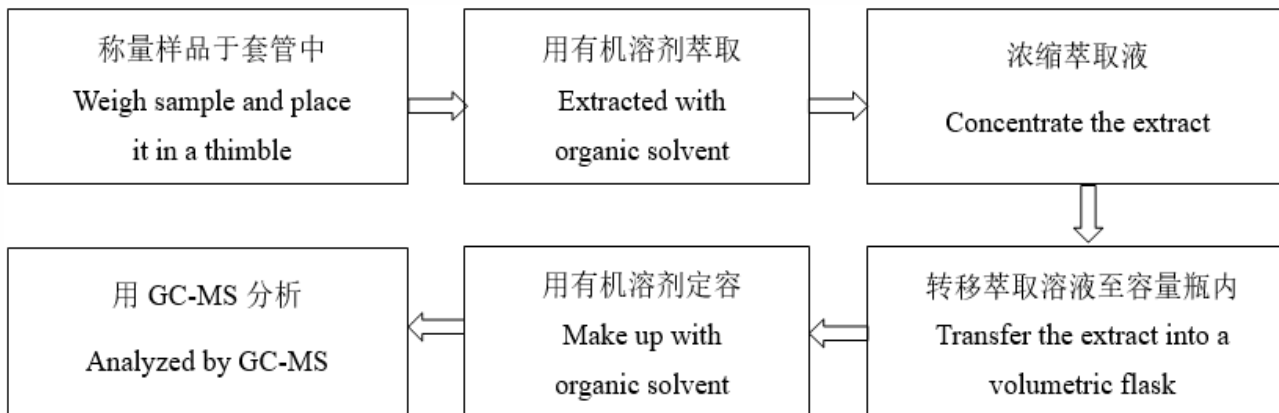
## 4. 多溴联苯 (PBBs), 多溴二苯醚 (PBDEs)

Polybrominated Biphenyls (PBBs), Polybrominated Diphenyl Ethers (PBDEs)



## 5. 邻苯二甲酸酯 (DBP, BBP, DEHP, DIBP)

Phthalates (DBP, BBP, DEHP, DIBP)

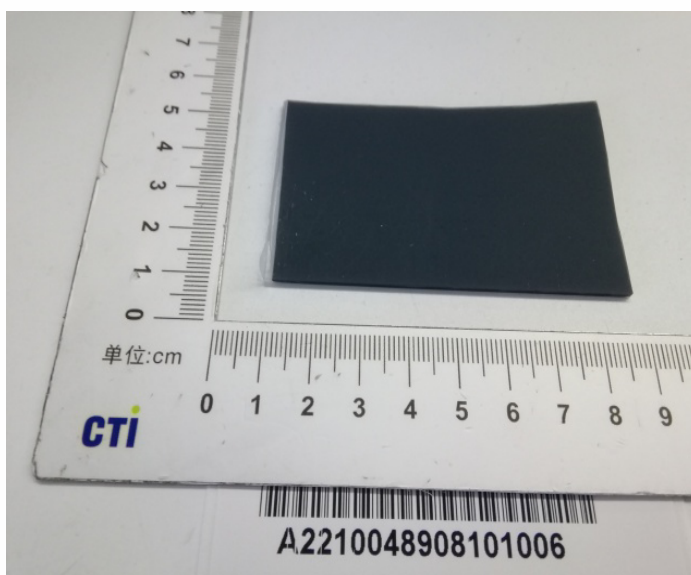


# 检测报告 Test Report

报告编号 A2210048908101006E  
Report No. A2210048908101006E

第 8 页 共 8 页  
Page 8 of 8

## 样品图片 Photo(s) of the sample(s)



### 声明 Statement:

1. 检测报告无批准人签字、“专用章”及报告骑缝章无效;  
This report is considered invalid without approved signature, special seal and the seal on the perforation;
2. 报告抬头公司名称及地址、样品及样品信息由申请者提供, 申请者应对其真实性负责, CTI未核实其真实性;  
The Company Name shown on Report and Address, the sample(s) and sample information was/were provided by the applicant who should be responsible for the authenticity which CTI hasn't verified;
3. 本报告检测结果仅对受测样品负责;  
The result(s) shown in this report refer(s) only to the sample(s) tested;
4. 未经CTI书面同意, 不得部分复制本报告;  
Without written approval of CTI, this report can't be reproduced except in full;
5. 如检测报告中的英文内容与中文内容有差异, 以中文为准。  
In case of any discrepancy between the English version and Chinese version of the testing reports (if generated), the Chinese version shall prevail.

\*\*\*报告结束\*\*\*

\*\*\* End of report \*\*\*